

TEMPCO®

SINCE 1958

QUALITY - DURABILITY - RELIABILITY

CATALOG 2025

3RD DRAFT



In existence since 1958, generations of families have enjoyed Tempco®'s products. Tempco® has come to be known for its great style, fit and durability that compliments the Western and outdoor lifestyle. The Tempco® brand includes a great selection of styles in outerwear that stand up to the elements and look great.



Tempco® jackets are original designs from the heart of Texas and there is a new collection every year. Many of our styles have become timeless classics. This year, we are proud to introduce new styles that encompass Western fashion trends. We hope you enjoy the 2025 Tempco® Collection.

2025

TEMPCO®

COLLECTION

SOFTSHELL
&
PADDED

PUFFERS

LEATHER
&
FAUX SUEDE

WESTERN JACKETS



TMI310 - TMI210 Dallas Softshell



TM6030 - Reed Jacket



TMI138 - TMI238 Denver



SOFTSHELL & PADDED

TMI105 - TMI205 Vikingo



TM6530 - Reed Coat



TMI316 - TM2316 Midland



SOFTSHELL & PADDED

The Tempco® Dallas all-season bonded jacket repels rain, resists wind and comfortably moves with you. Performance fabric and construction, paired with a great fit and designer styling makes it the perfect companion for going from your daytime adventures to your evening ones.

DALLAS JACKET

- ◇ Engineered from durable performance fabric bonded to soft microfleece.
- ◇ Provides insulation and mild stretch to move with you.
- ◇ Three zippered outside pockets and one inside chest pocket.
- ◇ Wind & rain resistant.
- ◇ Microfleece lining, with cuff and waist adjusters for warmth and fit.
- ◇ Spread collar zips all the way up.
- ◇ True to size fit with no padding and no extra bulk.
- ◇ Tempco® logo patch on left sleeve.
- ◇ Microfleece inside of jacket.



SOFTSHELL & PADDED

TM1310

Mens Dallas Softshell Jacket

MSRP: \$75.00

SIZES: S - 4XL



TM1310-BLACK



TM1310-COFFEE



TM1310-BARK



TM1310-OAK

**ALSO AVAILABLE
IN XLT AND 2XLT**

SOFTSHELL & PADDED

This versatile Tempco® Dallas softshell vest is stylish and perfect to wear with almost anything. This vest is an all-season bonded vest that repels rain, resists wind and comfortably moves with you. Performance fabric and construction, paired with a great fit and designer styling makes it the perfect companion for any occasion, daytime or evening. Buy more than one, buy them in several colors to match any outfit.

DALLAS VEST

- ◇ Microfleece inside.
- ◇ Provides insulation and mild stretch to move with you.
- ◇ Three zippered outside pockets and one inside chest pocket.
- ◇ Wind & rain resistant.
- ◇ Microfleece lining, with waist adjusters for warmth and fit.
- ◇ Spread collar zips all the way up.
- ◇ True to size fit with no padding and no extra bulk.
- ◇ Tempco® rubber/metal logo on the left chest.
- ◇ Engineered from durable performance fabric bonded to soft microfleece.



SOFTSHELL & PADDED

TM1210

Mens Dallas Softshell vest

MSRP: \$65.00

SIZES: S - 4XL



TM1310-BLACK



TM1310-COFFEE



TM1310-BARK



TM1310-OAK

**ALSO AVAILABLE
IN XLT AND 2XLT**

**REED POLY
TWILL JACKET**

This versatile Tempco® Reed is a twill-like midweight softshell jacket that will look stylish anywhere with its sherpa collar lining and suede trim accents.

- ◇ Twill like softshell that's water and wind repellent.
- ◇ Stand up collar with interior sherpa collar lining.
- ◇ Tempco® logo patch on sleeve.
- ◇ Adjustable cuffs with snaps.
- ◇ Nickel front closure zipper.
- ◇ Polyester quilted lining.



SOFTSHELL & PADDED

**NEW
STYLE**

MSRP: \$110.00

TM6030

Mens Reed Poly Twill Jacket

SIZES: S - 4XL



TM6030 - BLACK



TM6030 - CHARCOAL



TM6030 - BARK

**ALSO AVAILABLE
IN XLT AND 2XLT**

SOFTSHELL & PADDED

This versatile Tempco® Reed is a Twill-like midweight and midlength softshell coat that will look stylish anywhere with its sherpa collar lining and suede trims accents.

TWILL REED COAT

- ◇ Twill like softshell that's water and wind repellent.
- ◇ Polyester quilted lining.
- ◇ Stand up collar with interior sherpa collar lining.
- ◇ Nickel front closure zipper.
- ◇ Adjustable cuffs with snaps.
- ◇ Tempco® logo patch on sleeve.



MARLBORO

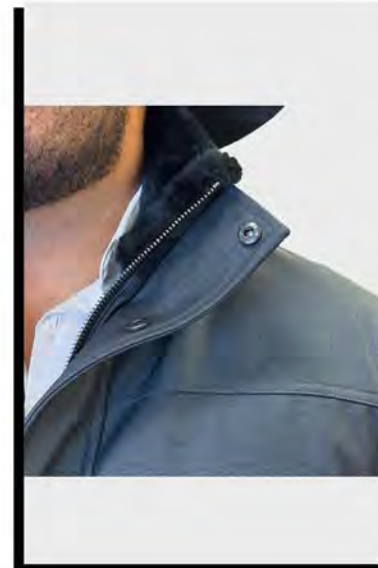
TM6530

Mens Reed Poly Twill Coat

**NEW
STYLE**

MSRP: \$115.00

SIZES: S - 2XL



TM6530 - CHARCOAL

SOFTSHELL & PADDED

This dressy club jacket is the new IT style for men.

Comfortable in all types of weather, this

medium weight jacket feels as good

as it looks. This versatile jacket

can be worn on any occasion

from a night out for dinner

to a family get-together.

DENVER JACKET

- ◇ Water repellent and wind repellent.
- ◇ Stand-up collar.
- ◇ Full-zip front closure.
- ◇ Quilted lining inside.
- ◇ Adjustable snap cuffs.
- ◇ Two outside zippered pockets.
- ◇ Velcro inside pocket.
- ◇ Tempco® logo patch on sleeve.
- ◇ Two snap pockets.



SOFTSHELL & PADDED

TM1138

Mens Denver Jacket

MSRP: \$75.00

SIZES: S - 4XL

ALSO AVAILABLE IN XLT AND 2XLT



TM1138-BLACK



TM1138 - BARK



TM1138 - NAVY



TM1138 - TAUPE

SOFTSHELL & PADDED

This Denver dressy club vest is the new IT style for men.

Comfortable in all types of weather, this medium weight vest feels as good as it looks. This versatile vest can be worn on any occasion from a night out for dinner to a family get-together.



- ◇ Water repellent and wind repellent.
- ◇ Stand-up collar.
- ◇ Full-zip front closure.
- ◇ Quilted lining inside.
- ◇ Two snap pockets.
- ◇ Velcro inside pocket.
- ◇ Tempco® logo patch on chest.



SOFTSHELL & PADDED

TM1238

Mens Denver Vest

MSRP: \$70.00

SIZES: S - 4XL



TM1238-BLACK



TM1238 - BARK



TM1238 - NAVY



TM1238 - TAUPE

**ALSO AVAILABLE
IN XLT AND 2XLT**

SOFTSHELL & PADDED

This microfleece bonded polyester softshell jacket is one of our newest styles, featuring front and back western yokes. This all-season bonded jacket repels rain, resists wind and comfortably moves with you with a great fit that's perfect for any occasion. This is an exclusive design in collaboration with Tempco® and El Vikingo®

- ◇ Provides insulation and mild stretch to move with you.
- ◇ Two chest pockets and two waist pockets.
- ◇ True to size fit with no padding and no extra bulk.
- ◇ Western yoke in front and back.
- ◇ Engineered from durable performance fabric bonded to soft microfleece.
- ◇ Spread collar zips all the way up.
- ◇ El Vikingo® logo patch on pocket.
- ◇ Tempco® logo patch on left shoulder.
- ◇ Microfleece lining.



SOFTSHELL & PADDED

**NEW
STYLE**

MSRP: \$100.00

TM1105

Mens Vikingo® Softshell Jacket

SIZES: S - 4XL



TM1105 - BLACK



TM1105 - RUST

SOFTSHELL & PADDED

This microfleece bonded polyester softshell vest is one of our newest styles, featuring front and back western yokes. This all-season bonded jacket repels rain, resists wind and comfortably moves with you with a great fit that's perfect for any occasion. This is an exclusive design in collaboration with Tempco® and El Vikingo®.

- 
- ◇ Microfleece lining
 - ◇ True to size fit with no padding and no extra bulk.
 - ◇ Two chest pockets and two waist pockets.
 - ◇ Western yoke in front and back.
 - ◇ Microfleece lining, with waist adjusters for warmth and fit.
 - ◇ Spread collar zips all the way up.
 - ◇ El Vikingo® logo patch on pocket.
 - ◇ Tempco® logo patch on chest.
 - ◇ Engineered from durable performance fabric bonded to soft microfleece.



SOFTSHELL & PADDED

TM1205

Mens Vikingo® Softshell Vest

**NEW
STYLE**

MSRP: \$90.00

SIZES: S - 4XL



TMI205-BLACK



TMI205-RUST

**ALSO AVAILABLE
IN XLT AND 2XLT**

SOFTSHELL & PADDED

This versatile Tempco® Midland Western style softshell trucker jacket is one of our newest styles. The Tempco® Midland all-season bonded jacket repels rain, resists wind and comfortably moves with you. Performance fabric and construction, paired with a great fitting western design make it perfect for any occasion.

- ◇ Engineered from durable performance fabric bonded to soft microfleece.
- ◇ Provides insulation and mild stretch to move with you.
- ◇ Two chest pockets, two waist pockets and one interior chest pocket.
- ◇ Trucker jacket with panels and western style yoke in the back.
- ◇ Wind and rain resistant.
- ◇ Spread collar zips all the way up.
- ◇ True to size fit with no padding and no extra bulk.
- ◇ Tempco® logo patch on left shoulder.
- ◇ Microfleece lining.
- ◇ Adjustable cuffs with snaps.



SOFTSHELL & PADDED

TM1316

Mens Midland Softshell Trucker Jacket

MSRP: \$85.00

SIZES: S - 4XL



TM1316 - WHISKEY



TM1316 - DARK CHARCOAL



TM1316 - BLACK



TM1316 - TAUPE

**ALSO AVAILABLE
IN XLT AND 2XLT**

SOFTSHELL & PADDED

This versatile Tempco® Midland Western style softshell trucker vest is one of our newest styles. The Tempco® Midland all-season bonded vest repels rain, resists wind and comfortably moves with you. Performance fabric and construction, paired with a great fitting western design make it perfect for any occasion.

MIDLAND VEST

- ◇ Engineered from durable performance fabric bonded to soft microfleece.
- ◇ Provides insulation and mild stretch to move with you.
- ◇ Two chest pockets and two waist pockets.
- ◇ Trucker vest with panels and western style yoke in the back.
- ◇ Wind and rain resistant.
- ◇ Spread collar zips all the way up.
- ◇ True to size fit with no padding and no extra bulk.
- ◇ One interior chest pocket.
- ◇ Microfleece lining.



SOFTSHELL & PADDED

TM2316

Mens Midland Softshell Vest

MSRP: \$75.00

SIZES: S - 4XL



TM1316 - WHISKEY



TM1316 - DARK CHARCOAL



TM1316 - BLACK



TM1316 - TAUPE

**ALSO AVAILABLE
IN XLT AND 2XLT**

TM5106 - Santiago Shirt Jacket



TM5008 - Dutton Jacket



TM6540 - Bodie Coat



WESTERN

TM6020 - TM6520 Carson Tweed



Jacket



Coat

TM1135 - TM1235 Yellowstone



Jacket



Vest

SANTIAGO SHIRT JACKET



The Santiago is a durable cotton blend canvas shirt jacket that provides warmth and comfort with a soft sherpa body lining and polyester sleeve lining, accented by western yokes.

- ◇ Midweight cotton-blend canvas shirt jacket.
- ◇ Front and back western style yoke.
- ◇ Sherpa body lining and quilted polyester sleeve lining.
- ◇ Two chest pockets with snap flaps.
- ◇ Lower waist welt pockets.
- ◇ Adjustable cuffs with snaps.
- ◇ Hidden snap front closure.
- ◇ Tempco® logo patch on left shoulder.



WESTERN

TM5106

Mens Santiago Shirt Jacket

NEW
STYLE

MSRP: \$100.00

SIZES: S - 4XL



COLORWAY

ANTIQUÉ BRASS
SNAP

ANTIQUÉ BRASS
SNAP

ANTIQUÉ NICKLE
SNAP

BARK

WHISKEY

BLACK

ALSO AVAILABLE
IN XLT AND 2XLT



DUTTON FLEECE JACKET

**This lightweight Dutton fleece
Jacket with honey-comb
mesh fleece will keep
you comfortable
and warm.**

- ◇ Lightweight honey-comb mesh fleece exterior.
- ◇ 100% polyester.
- ◇ Interior soft flannel fleece feel.
- ◇ Two lower zippered pockets.
- ◇ Front full zipper closure.
- ◇ Tempco® logo patch on left shoulder.



WESTERN

TM5008

Mens Dutton Fleece Jacket

**NEW
STYLE**

MSRP: \$65.00

SIZES: S - 4XL



TM5008 - BARK



TM5008 - BLACK



TM5008 - NAVY

**ALSO AVAILABLE
IN XLT AND 2XLT**

When you need a heavyweight jacket for a colder weather, the Carson tweed jacket is the perfect choice with western accents and a classic look.

CARSON TWEED JACKET

- ◆ Heavyweight tweed.
- ◆ Body sherpa lining.
- ◆ Sleeve quilted polyester lining.
- ◆ More wiggle room in the biceps for layering in colder weather.
- ◆ Front and back western style yoke.
- ◆ Sherpa shirt style collar.
- ◆ Two chest flap pockets.
- ◆ Two welt waist pockets
- ◆ Bark suede welt pocket trim.
- ◆ Tempco® logo patch on left shoulder.



WESTERN

TM6020

Mens Carson Tweed Jacket

MSRP: \$110.00

SIZES: S - 4XL



TM6020 - BEIGE



CARSON TWEED COAT

When you need a heavyweight coat for a colder weather, the Carson tweed coat is the perfect choice with western accents and a classic look.

- ◇ Heavyweight tweed.
- ◇ Body sherpa lining.
- ◇ Sleeve quilted polyester lining.
- ◇ Front and back western style yoke.
- ◇ More wiggle room in the biceps for layering in colder weather.
- ◇ Sherpa aviator collar
- ◇ Two chest flap pockets.
- ◇ Two welt waist pockets.
- ◇ Folded sherpa cuffs.
- ◇ Bark suede welt pocket trim.
- ◇ Tempco® logo patch on left shoulder.



WESTERN

TM6520

Mens Carson Tweed Coat

NEW
STYLE

MSRP: \$115.00

SIZES: S - 4XL



TM6520 - BEIGE



BODIE JACKET

The Bodie wool plaid jacket takes you back in time with a vintage western look. This heavyweight wool-blend jacket with body sherpa lining is durable and warm.

- ◆ Heavyweight wool-blend plaid jacket.
- ◆ Body sherpa lining.
- ◆ Quilted polyester sleeve lining.
- ◆ Two chest pockets with flap.
- ◆ Two lower welt pockets.
- ◆ Adjustable cuffs with snaps.
- ◆ Front metal zipper closure.
- ◆ Side seam slit with hidden snap closures.
- ◆ Tempco® logo patch on left shoulder.



WESTERN

TM6540

Mens Bodie Coat

**NEW
STYLE**

MSRP: \$115.00

SIZES: S - 4XL



TM6540 - MULTI

YELLOWSTONE JACKET



You will love the nostalgic feel of the Yellowstone quilted jacket. It's a classic and refined midweight jacket with a western look that never goes out of style.

- ◇ Midweight quilted jacket in classic shirt style.
- ◇ Quilted cotton blend shell.
- ◇ Polyester lining.
- ◇ 200 g padded.
- ◇ Front antique brass snap closure.
- ◇ Bark suede trim collar and pocket flaps.
- ◇ Two-way flap waist pockets.
- ◇ Adjustable cuffs with snaps.
- ◇ Tempco® logo patch on left shoulder.



WESTERN

TM1135

Mens Yellowstone Jacket

NEW
STYLE

MSRP: \$115.00

SIZES: S - 4XL



Two-way pocket.

ALL SWATCHES APPROVED

COLORWAY

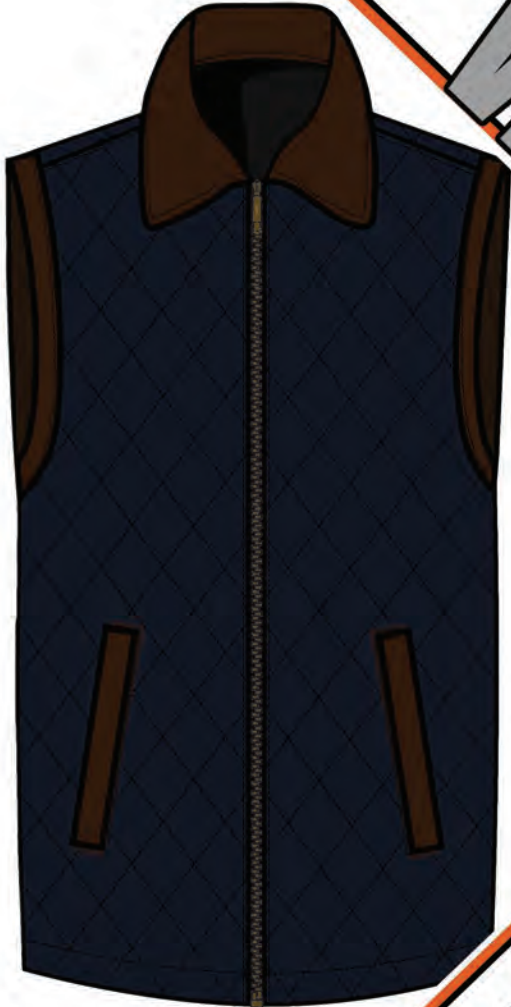


200g padded.

ALSO AVAILABLE
IN XLT AND 2XLT

You will love the nostalgic feel of the Yellowstone quilted vest. It's a classic and refined midweight jacket with a western look that never goes out of style.

YELLOWSTONE VEST



- ◇ Midweight quilted vest.
- ◇ Quilted cotton blend shell.
- ◇ Polyester lining.
- ◇ Front antique brass snap closure.
- ◇ Bark suede trim collar and pocket flaps.
- ◇ Two-way flap waist pockets.



WESTERN

TM1235

Mens Yellowstone Vest

NEW
STYLE

MSRP: \$75.00

SIZES: S - 4XL



ALL SWATCHES APPROVED

COLORWAY



ANTIQUE NICKLE
SNAP

200g padded.

ALSO AVAILABLE
IN XLT AND 2XLT

TM6001 - Marlboro Sherpa



TM6002 - Marlboro Shearling



FAUX SUEDE

TM6500 - Marlboro Coat



TM6012 - Walker





This mens faux suede sherpa jacket mixes the Old West with contemporary fashion. Made out of faux suede, this full-zip jacket has a snap front storm flap. Two side-entry pockets give it that authentic Western look. Throw this jacket on over anything for warmth and an authentic Western look.

- ◇ Zipper and snap closure.
- ◇ Adjustable snap sleeves.
- ◇ Soft faux sherpa lining and collar.
- ◇ Western style yoke on the front and back.



FAUX SUEDE

TM6001

Mens Marlboro Faux Suede Sherpa Jacket

MSRP: \$100.00

SIZES: S - 4XL



TM6001-COGNAC

**ALSO AVAILABLE
IN XLT AND 2XLT**



MARLBORO FAUX SUEDE SHEARLING

This mens faux suede shearling jacket mixes the Old West with contemporary fashion. Made out of faux suede, this full-zip jacket has a snap front storm flap. Two side-entry pockets give it that authentic Western look. Throw this jacket on over anything for warmth and an authentic Western look.

- ◇ Zipper and snap closure.
- ◇ Adjustable snap sleeves.
- ◇ Soft faux shearling lining and collar.
- ◇ Western style yoke on the front and back.



FAUX SUEDE

TM6002

Mens Marlboro Faux Suede Shearling Jacket

MSRP: \$100.00

SIZES: S - 4XL



TM6002-TWO-TONE



TM6002-BARK



TM6002-BLACK



TM6002-COGNAC



TM6002-COFFEE

**ALSO AVAILABLE
IN XLT AND 2XLT**

**MARLBORO FAUX
SUEDE SHEARLING COAT**

This Marlboro faux suede shearling coat is inspired in vintage Western style and detailing that makes it one of a kind.

Folded shearling effect and lined waist pockets with an aviator style collar and soft shearling lining.

This faux shearling coat features a front zipper, snap buttons, a western style yoke on the front and back and Tempco® logo on front left bottom.

- ◇ Button closure.
- ◇ Faux shearling lining and collar.
- ◇ Western yokes in front and back.
- ◇ Tempco® logo patch on the front left bottom.



FAUX SUEDE

TM6500

Mens Marlboro Faux Suede Sherpa Coat

MSRP: \$125.00

SIZES: S - 2XL



TM6500-COGNAC



TM6500-BLACK



TM6500-COFFEE

**WALKER FAUX
SUEDE JACKET**



The Walker faux suede jacket is part of the exclusive Vikingo® collection. With its faux shearling lining it's soft and cozy, yet super stylish with western yoke accents in front and back.

- ◇ Midweight faux suede jacket.
- ◇ Soft shearling lining.
- ◇ Two lower welt pockets.
- ◇ Front zipper closure.
- ◇ Front and back western style PU leather yoke.
- ◇ Bark PU Pining Trim accents.
- ◇ Tempco® logo leather like patch on the front left bottom.



FAUX SUEDE

TM6012

Mens Faux Suede Jacket

**NEW
STYLE**

MSRP: \$115.00

SIZES: S - 4XL



COLORWAY



COGNAC

**ALSO AVAILABLE
IN XLT AND 2XLT**

TM6008 Prescott Trucker Jacket



CANVAS

TMI334 Cruces Canvas Hood Jacket



TMI335 Carter Canvas Hooded Jacket



This Prescott trucker jacket with durable canvas and sherpa lining will look stylish while keeping you warm and cozy.

The attention to details on this design will look good with anything. Accents include two pockets with snap flaps and waist pockets, adjustable cuffs with snaps, snap front closure and Tempco® logo on the left sleeve.

- ◇ Snap front closure.
- ◇ Adjustable cuffs.
- ◇ Soft sherpa lining.



CANVAS

TM6008

Mens Prescott Trucker Jacket

**NEW
STYLE**

MSRP: \$80.00

SIZES: S - 4XL



TM6008- WHISKEY



TM6008 - BLACK

**ALSO AVAILABLE
IN XLT AND 2XLT**

CRUCES CANVAS HOODED JACKET

This sturdy Cruces canvas hooded jacket works as hard as you do with durable canvas and sherpa lining.

Features two waist pockets with warm sherpa lining, one inside secure chest pocket, quilted lining in the sleeves.

The hidden rib cuff on the sleeves keeps the cold out. Also features Tempco® logo on left arm.

- ◇ Durable canvas.
- ◇ Metal zipper closure.
- ◇ Hidden rib cuff.
- ◇ Soft sherpa lining.



CANVAS

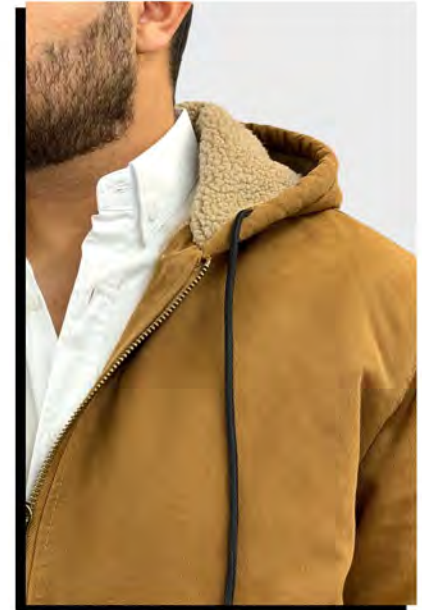
TM1334

Mens Cruces Canvas Hooded Jacket

**NEW
STYLE**

MSRP: \$100.00

SIZES: S - 4XL



TM1334 - TAN

**ALSO AVAILABLE
IN XLT AND 2XLT**

**CARTER CANVAS
HOODED JACKET**

The sturdy Carter canvas hooded jacket will work as hard as you do. You'll be warm and comfortable with the soft sherpa fleece body lining and the hand warmer welt pockets.



- ◇ Midweight quilted jacket in classic shirt style.
- ◇ Quilted cotton blend shell.
- ◇ Polyester lining.
- ◇ 200 g padded.
- ◇ Front antique brass snap closure.
- ◇ Bark suede trim collar and pocket flaps.
- ◇ Two-way flap waist pockets.
- ◇ Adjustable cuffs with snaps.
- ◇ Tempco® logo patch on left shoulder.



CANVAS

TM1335

Mens Carter Canvas Hooded Jacket

**NEW
STYLE**

MSRP: \$115.00

SIZES: S - 4XL



TMI335 - TAN



TMI335 - BLACK

**ALSO AVAILABLE
IN XLT AND 2XLT**

TM6003 Alpine



LEATHER & ECO-LEATHER

TM6010 Cheyenne



ECO-ALPINE
LEATHER

The mens Alpine Jacket delivers a vintage yet modern look in a leather trucker jacket. This eco-leather style comes in a distressed chocolate brown color, and in black color too, giving it a bomber jacket feel. Keep warm without compromising your style whether you're out riding your motorcycle or hanging out with friends on the weekend.



- ◇ Eco-friendly leather.
- ◇ Quilted polyester lining.
- ◇ Removable sherpa collar.



LEATHER & ECO-LEATHER

TM6003

Mens Alpine Eco-Leather Jacket

MSRP: \$90.00

SIZES: S - 4XL



TM6003-WHISKEY



TM6003-BLACK

CHEYENNE TRUCKER JACKET

This Cheyenne Trucker jacket is a heavyweight PU leather jacket with two waist pockets and dark brown PU leather trim. The soft white sherpa lining is cozy and warm. This trucker jacket features a western style yoke on the front and back and a Tempco® logo on front left bottom.

- ◇ Made with PU leather.
- ◇ Zipper closure.
- ◇ Faux shearling lining and collar.
- ◇ Western yokes in front and back.



LEATHER & ECO-LEATHER

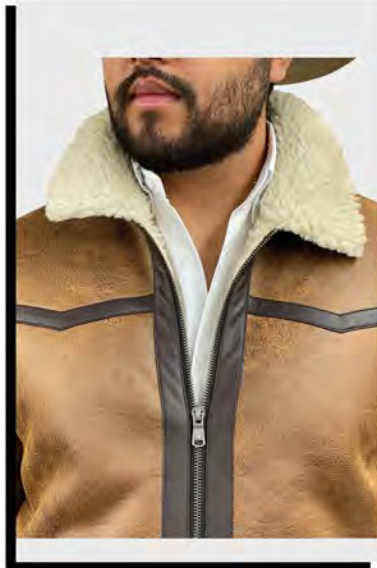
TM6010

Mens Cheyenne Trucker Jacket

**NEW
STYLE**

MSRP: \$100.00

SIZES: S - 4XL



TM6500-WHISKEY



**ALSO AVAILABLE
IN XLT AND 2XLT**

TMI130 - TMI230 Durango Reversible



Jacket



Vest

TMI313 - TMI213 Colorado



Jacket



Vest

PUFFERS

Sportlite




TM3131 - Aspen Down Ski Jacket



TMI323 - Ruidoso Reversible Jacket



This original Tempco® Men's Sportlite Classic Western puffer is our all-time best seller. The Sportlite jacket has a slim fit with no extra bulk to get in the way when you are working with horses, livestock or machinery. Warm enough to wear on its own year-round and thin enough to fit under a parka for severe weather. This is a short waisted jacket with an elastic band on the sides so it stays put, perfect for riding a horse or a motorcycle.

- 
- SPORTLITE JACKET
- ◇ 550 fill power humanely sourced white down filling.
 - ◇ 90% duck down, 10% feather.
 - ◇ Wind and rain resistant.
 - ◇ Ribbed cuffs and collar.
 - ◇ Window-pane quilting keeps the down in and the cold out.
 - ◇ Two waist pockets and one interior pocket.
 - ◇ Durable nylon shell and lining.
 - ◇ Sturdy wide quilts to keep you warm.
 - ◇ Tempco® logo patch on arm.



PUFFER

SPORTLITE

Mens Sportlite Jacket

MSRP: \$120.00

SIZES: S - 3XL



SPORTLITE - BLACK



SPORTLITE - NAVY



SPORTLITE - OXBLOOD



SPORTLITE - OAK

PUFFER

Generous WarmTek Eco down filling and wide quilts give this classic heavyweight Western puffer and updated look. Double your wear with this reversible jacket with colorful aztec pattern on inside. Check out the box weave fabric on this heavyweight, high quality, rough and ready jacket with a polyester shell. The durability and extra warmth that you need with the cool look you want.

**DURANGO
REVERSIBLE**

- ◇ Two outside snap pockets.
- ◇ Chin guard on zipper.
- ◇ Polyester shell and lining with Tempco® WarmTek Synthetic Eco Friendly down blend insulation.
- ◇ Machine wash.
- ◇ Wind and rain resistant.
- ◇ Heavyweight puffer jacket.
- ◇ Sturdy wide quilts to keep you warm.
- ◇ Elastic cuffs keep the wind out and the warmth in.
- ◇ Tempco® logo patch on sleeve.



PUFFER

TM1130

Mens Durango Reversible Puffer Jacket

**NEW
COLORS**

MSRP: \$75.00

SIZES: S - 4XL

ALSO AVAILABLE IN XLT AND 2XLT



TM1130 - BLACK



TM1130 - BARK



TM1130 - TAUPE



Generous WarmTek Eco down filling and wide quilts give this classic heavyweight Western puffer and updated look. Double your wear with this reversible vest with colorful aztec pattern on inside. Check out the box weave fabric on this heavyweight, high quality, rough and ready vest with a polyester shell. The durability and extra warmth that you need with the cool look you want.

**DURANGO
REVERSIBLE**

- ◇ Two outside snap pockets.
- ◇ Chin guard on zipper.
- ◇ Polyester shell and lining with Tempco® WarmTek Synthetic Eco Friendly down blend insulation.
- ◇ Machine wash.
- ◇ Wind and rain resistant.
- ◇ Heavyweight puffer vest.
- ◇ Sturdy wide quilts to keep you warm.
- ◇ Elastic cuffs keep the wind out and the warmth in.
- ◇ Tempco® logo patch on front.



PUFFER

TM1230

Mens Durango Reversible Puffer Jacket

**NEW
COLORS**

MSRP: \$65.00

SIZES: S - 4XL

ALSO AVAILABLE IN XLT AND 2XLT



TMI230 - BLACK



TMI230 - BARK



TMI230 - TAUPE



PUFFER

Generous WarmTek Eco down filling and wide quilts give this classic heavyweight Western puffer and updated look. Double your wear with this reversible jacket with colorful aztec pattern on inside. Check out the box weave fabric on this heavyweight, high quality, rough and ready jacket with a polyester shell. The durability and extra warmth that you need with the cool look you want.

**DURANGO
REVERSIBLE**

- ◇ Two outside snap pockets.
- ◇ Chin guard on zipper.
- ◇ Polyester shell and lining with Tempco® WarmTek Synthetic Eco Friendly down blend insulation.
- ◇ Machine wash.
- ◇ Wind and rain resistant.
- ◇ Heavyweight puffer jacket.
- ◇ Sturdy wide quilts to keep you warm.
- ◇ Elastic cuffs keep the wind out and the warmth in.
- ◇ Tempco® logo patch on sleeve.



PUFFER

TM1129

Mens Durango Reversible Puffer Jacket

**NEW
COLORS**

MSRP: \$75.00

SIZES: S - 4XL

ALSO AVAILABLE IN XLT AND 2XLT



TM1129 - BLACK



TM1129 - NAVY



TM1129 - OAK



Generous WarmTek Eco down filling and wide quilts give this classic Western puffer vest an updated look. Two great styles in one with this stylish reversible vest with printed Aztec pattern on the inside! Check out the box weave fabric on this heavyweight, high quality, rough and ready vest with a polyester shell. The durability and extra warmth that you need with the cool look you want.

- ◇ Two outside snap pockets.
- ◇ Chin guard on zipper.
- ◇ Polyester shell and lining with Tempco® WarmTek Synthetic Eco Friendly down blend insulation.
- ◇ Wind and rain resistant.
- ◇ Heavyweight puffer vest.
- ◇ Sturdy wide quilts to keep you warm.
- ◇ Tempco® logo patch on chest.



PUFFER

TM1229

Mens Durango Reversible Puffer Vest

MSRP: \$65.00

SIZES: S - 4XL

ALSO AVAILABLE IN XLT AND 2XLT





MEDIUM WEIGHT
COLORADO

This sturdy midweight quilted Western puffer jacket is just the right warmth for most winter days.

This jacket is made of special blend of stretch polyester that's made to move with you and work as hard as you do on the ranch or at your work site.

- ◇ WarmTek Eco Down that feels and keeps you warm like down.
- ◇ Two outside zippered pockets plus for easy access and convenience.
- ◇ Wind and rain resistant.
- ◇ Medium weight puffer jacket.
- ◇ Sturdy wide quilts to keep you warm.
- ◇ Sporty fit, slightly shorter and more fitted stretch polyester.
- ◇ Tempco® logo patch on sleeve.



PUFFER

TM1313

Mens Colorado Medium Weight Puffer Jacket

MSRP: \$75.00

SIZES: S - 4XL



TM1313 - BLACK



TM1313 - BARK



TM1313 - NAVY



TM1313 - AMBER

**ALSO AVAILABLE
IN XLT AND 2XLT**

COLORADO
VEST

This sturdy midweight quilted Western puffer vest is just the right warmth for most winter days.

This vest is made of special blend of stretch polyester that's made to move with you and work as hard as you do on the ranch or at your work site.

- ◇ WarmTek Eco Down that feels and keeps you warm like down.
- ◇ Two outside zippered pockets plus for easy access and convenience.
- ◇ Wind and rain resistant.
- ◇ Medium weight puffer vest.
- ◇ Sturdy wide quilts to keep you warm.
- ◇ Sporty fit, slightly shorter and more fitted stretch polyester.
- ◇ Tempco® logo patch on sleeve.



PUFFER

TM1213

Mens Colorado Medium Weight Puffer Vest

**NEW
STYLE**

MSRP: \$70.00

SIZES: S - 4XL



TM1213 - BLACK



TM1213 - BARK



TM1213 - NAVY



TM1213 - AMBER

**ALSO AVAILABLE
IN XLT AND 2XLT**



**RUIDOSO
REVERSIBLE**

The soft feel of a lightweight Western puffer jacket with a more durable construction, plus it's reversible! Two great styles in one with this stylish reversible jacket with printed Aztec pattern on the inside! Warm and comfy WarmTek Eco down filling. You won't have to worry about harsh weather conditions like cold wind and rain, when you have this jacket on, it helps you keep the elements out.

- ◇ WarmTek Eco Down that feels and keeps you warm like down.
- ◇ Two outside zippered pockets plus for easy access and convenience.
- ◇ Wind and rain resistant.
- ◇ Lightweight puffer jacket.
- ◇ Tempco® logo patch on sleeve.



PUFFER

TM1323

Mens Ruidoso Reversible Puffer Jacket

MSRP: \$75.00

SIZES: S - 4XL

ALSO AVAILABLE IN XLT AND 2XLT



TMI323 - BLACK



TMI323 - BARK



TMI323 - TAUPE



ASPEN SKI JACKET

This Aspen Ski Jacket is a heavyweight quilted ski puffer made with a polyester shell and 100% goose down filling. This jacket features an internal phone pocket and Ski Pass pocket on the left sleeve, waist pocket, hidden hood and YKK® Aquaguard® which makes it highly water resistant.

- ◇ 100% Goose down filling.
- ◇ Highly water resistant.
- ◇ Front zipper closure
- ◇ Tempco® logo on left sleeve.



PUFFER

TM3131

Mens Aspen Ski Jacket

MSRP: \$200.00

SIZES: S - 4XL



TM3131 - SLATEBLUE/RUSTORANGE



TM3131 - BLACK/RED



TM3131 - GRAY/BRIGHTORANGE

**ALSO AVAILABLE
IN XLT AND 2XLT**

TM1105 - Vikingo® Softshell Jacket



TM1205 - Vikingo® Softshell Vest



VIKINGO® COLLECTION

TM6012 - Walker Faux Suede Jacket



This microfleece bonded polyester softshell jacket is one of our newest styles, featuring front and back western yokes. This all-season bonded jacket repels rain, resists wind and comfortably moves with you with a great fit that's perfect for any occasion. This is an exclusive design in collaboration with Tempco® and El Vikingo®

- ◇ Provides insulation and mild stretch to move with you.
- ◇ Two chest pockets and two waist pockets.
- ◇ True to size fit with no padding and no extra bulk.
- ◇ Western yoke in front and back.
- ◇ Engineered from durable performance fabric bonded to soft microfleece.
- ◇ Spread collar zips all the way up.
- ◇ El Vikingo® logo patch on pocket.
- ◇ Tempco® logo patch on left shoulder.
- ◇ Microfleece lining.



VIKINGO® COLLECTION

**NEW
STYLE**

MSRP: \$100.00

TM1105

Mens Vikingo® Softshell Jacket

SIZES: S - 4XL



TM1105 - BLACK



TM1105 - RUST

This microfleece bonded polyester softshell vest is one of our newest styles, featuring front and back western yokes. This all-season bonded jacket repels rain, resists wind and comfortably moves with you with a great fit that's perfect for any occasion. This is an exclusive design in collaboration with Tempco® and El Vikingo®.

- 
- ◇ Microfleece lining
 - ◇ True to size fit with no padding and no extra bulk.
 - ◇ Two chest pockets and two waist pockets.
 - ◇ Western yoke in front and back.
 - ◇ Microfleece lining, with waist adjusters for warmth and fit.
 - ◇ Spread collar zips all the way up.
 - ◇ El Vikingo® logo patch on pocket.
 - ◇ Tempco® logo patch on chest.
 - ◇ Engineered from durable performance fabric bonded to soft microfleece.



VIKINGO® COLLECTION

**NEW
STYLE**

MSRP: \$90.00

TM1205

Mens Vikingo® Softshell Vest

SIZES: S - 4XL



TM1205-BLACK



TM1205-RUST

**ALSO AVAILABLE
IN XLT AND 2XLT**

**WALKER FAUX
SUEDE JACKET**



The Walker faux suede jacket is part of the exclusive Vikingo® collection. With its faux shearling lining it's soft and cozy, yet super stylish with western yoke accents in front and back.

- ◇ Midweight faux suede jacket.
- ◇ Soft shearling lining.
- ◇ Two lower welt pockets.
- ◇ Front zipper closure.
- ◇ Front and back western style PU leather yoke.
- ◇ Bark PU Pining Trim accents.
- ◇ Tempco® logo leather like patch on the front left bottom.



VIKINGO® COLLECTION

TM6012

Mens Faux Suede Jacket

**NEW
STYLE**

MSRP: \$115.00

SIZES: S - 4XL



COLORWAY



**ALSO AVAILABLE
IN XLT AND 2XLT**

TL1310 Dallas Softshell



TL1323 Ruidoso Reversible Puffer



TL1135 - TMI235 Yellowstone



TL5004 Nicole Fleece



TL6003 Harper Suede



TL0820 Paloma Puffer



WOMENS

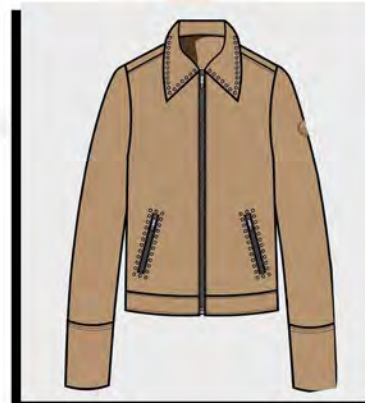
TL0806 Vail Puffer



TL6002 Olivia Suede



TL1262 Dakota Suede



TL1263 Dixie Suede



TL1264 Harlow Leather



DALLAS JACKET

The Tempco® Dallas all-season bonded jacket repels rain, resists wind and comfortably moves with you. Performance fabric and construction, paired with a great fit and designer styling makes it the perfect companion for going from your daytime adventures to your evening ones. This jacket is fitted for a flattering look that accents your figure.

- ◇ Engineered from durable performance fabric bonded to soft microfleece.
- ◇ Provides insulation and mild stretch to move with you.
- ◇ Three zippered outside pockets and one inside chest pocket.
- ◇ Wind & rain resistant.
- ◇ Microfleece lining, with cuff and waist adjusters for warmth and fit.
- ◇ Spread collar zips all the way up.
- ◇ True to size fit with no padding and no extra bulk.
- ◇ Microfleece inside of jacket.
- ◇ Tempco® logo patch on left shoulder.



WOMENS

TL1310

Womens Dallas Softshell Jacket

MSRP: \$75.00

SIZES: XS - 4XL





RUIDOSO REVERSIBLE

The Ruidoso has the soft feel of a lightweight puffer jacket with a more durable construction, plus it's reversible!

Two great styles in one with this stylish reversible jacket with printed Aztec pattern on the inside!

Warm and comfy WarmTek Eco down filling.

You won't have to worry about harsh

weather conditions like cold wind

and rain, when you have this

jacket on, it helps you keep

the elements out.

- ◇ WarmTek Eco Down that feels and keeps you warm like down.
- ◇ Two outside zippered pockets plus for easy access and convenience.
- ◇ Wind and rain resistant.
- ◇ Lightweight puffer jacket.
- ◇ Figure flattering style.
- ◇ Tempco® logo patch on sleeve.



WOMENS

TL1323

Womens Ruidoso Reversible Puffer Jacket

**NEW
COLORS**

MSRP: \$75.00

SIZES: XS - 4XL



YELLOWSTONE JACKET



You will love the nostalgic feel of the Yellowstone quilted jacket. It's a classic and refined midweight jacket with a western look that never goes out of style.

- ◇ Midweight waxed cotton-blend quilted jacket.
- ◇ Classic shirt-style collar.
- ◇ Bark suede trim.
- ◇ Polyester lining.
- ◇ Two lower waist welt pockets.
- ◇ Front metal zipper closure.
- ◇ Adjustable cuffs with snaps.
- ◇ Tempco® logo patch on sleeve.



WOMENS

TL1135

Womens Yellowstone Jacket

**NEW
STYLE**

MSRP: \$100.00

SIZES: XS - 4XL



COLORWAY

WINE
PANTONE
504 C

COGNAC

NAVY

BLACK

YELLOWSTONE VEST



You will love the nostalgic feel of the Yellowstone quilted vest. It's a classic and refined midweight jacket with a western look that never goes out of style.

- ◆ Super-soft midweight fleece fabric.
- ◆ Built to keep you warm, dry and comfortable.
- ◆ Full zipper.
- ◆ Shell: 100% polyester.
- ◆ Lining: 100% Polyester.
- ◆ Lining: 100% Polyester.
- ◆ Lining: 100% Polyester.



WOMENS

TL1235

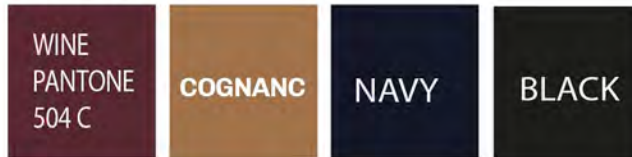
Womens Yellowstone Vest

MSRP: \$75.00

SIZES: XS - 4XL



COLORWAY



PUFFER VAIL JACKET



This super warm puffer jacket features a hood with glam fur and flattering shape that will enhance your style while giving you extra warmth and protection without weighing you down. Using our WarmTek Eco-Friendly down filling is our secret to being warm yet lightweight.

- ◇ Two exterior snap pockets for easy access and convenience.
- ◇ Removable faux fur hood.
- ◇ WarmTek Eco Down that feels and keeps you warm like down.
- ◇ Our warmest down jacket for colder days.
- ◇ Polyester shell lining.
- ◇ Stylish quilting to flatter any figure.
- ◇ Tempco® logo patch on sleeve.



WOMENS

TL0806

Womens Vail Hooded Puffer Jacket

MSRP: \$90.00

SIZES: XS - 4XL



TL0806 - BLACK



TL0806 - OAK



PALOMA PUFFER COAT

This heavyweight jacket features a hood with glam fur and flattering shape that will enhance your style while giving you extra warmth and protection without weighing you down. Using our WarmTek Eco-Friendly down filling is our secret to being warm yet lightweight.

- ◇ Two exterior snap pockets for easy access and convenience.
- ◇ Faux fur hood.
- ◇ WarmTek Eco Down that feels and keeps you warm like down.
- ◇ Our warmest down coat for colder days.
- ◇ Shiny nylon shell and polyester lining.
- ◇ Stylish quilting to flatter any figure.
- ◇ Tempco® logo patch on sleeve.



WOMENS

TL0820

Womens Paloma Puffer Coat

**NEW
STYLE**

MSRP: \$125.00

SIZES: XS - 4XL



TL0820 - BLACK



TL0820 - DARKPLUM



TL0820 - BARK



OLIVIA FAUX SUEDE JACKET

This stylish womens faux suede jacket has a cozy yet stylish faux shearling lining so you'll stay warm in cold weather for a Nashville night out on the town. This jacket is versatile to wear with any outfit for your favorite winter look. Embellished with matching accents including zipper and logo on arm.

- ◆ Full zipper.
- ◆ Soft faux shearling lining and collar.
- ◆ Tempco® logo patch on sleeve.



WOMENS

TL6002

Womens Olivia Faux Suede Jacket

MSRP: \$100.00

SIZES: XS - 4XL



TL6002 - BLACK



TL6002 - COFFEE

DAKOTA SUEDE JACKET



The Dakota is a Western inspired faux-suede jacket that will complement any outfit with its western details, like the western yoke and metal studs.

- ◇ Faux-suede jacket.
- ◇ Two zippered waist pockets.
- ◇ Tempco® print quilted lining.
- ◇ Shirt-style collar.
- ◇ Front metal zipper closure.
- ◇ Metal studs detail on the collar and pockets.
- ◇ Back western style yoke.
- ◇ Tempco® logo on the left shoulder.



WOMENS

TL1262

Womens Dakota Suede Jacket

**NEW
STYLE**

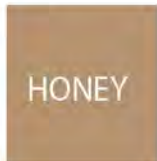
MSRP: \$100.00

SIZES: XS - 4XL

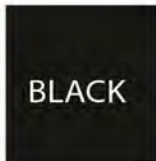
SMALLER METAL STUDS



COLORWAY



HONEY



BLACK

DIXIE
SUEDE JACKET

Anyone who loves western fashion is sure to fall in love with the boot stitch style embroidery on the Dixie jacket.

- ◇ Faux-suede western style jacket.
- ◇ Two handwarmer pockets with zipper closure
- ◇ Black polyester lining.
- ◇ PU leather whip stitch detail.
- ◇ Front and back boot stitch style embroidery.
- ◇ Front zipper closure.
- ◇ Front and back western style yoke.
- ◇ Tempco® logo on the left shoulder.



WOMENS

TL1263

Womens Dixie Suede Jacket

**NEW
STYLE**

MSRP: \$90.00

SIZES: XS - 4XL

Front and back boot
stitch style embroidery



COLORWAY



RUST



HARLOW LEATHER JACKET

This heavyweight jacket features a hood with glam fur and flattering shape that will enhance your style while giving you extra warmth and protection without weighing you down. Using our WarmTek Eco-Friendly down filling is our secret to being warm yet lightweight.

- ◇ Two-tone faux suede/PU leather.
- ◇ Two handwarmer welt pockets with zipper closure.
- ◇ PU leather collar, cuffs, yoke and hem.
- ◇ Front and back western style yoke bark.
- ◇ Tempco® logo on the left shoulder.



WOMENS

TL1264

Womens Harlow Leather Jacket

NEW
STYLE

MSRP: \$100.00

SIZES: XS - 4XL

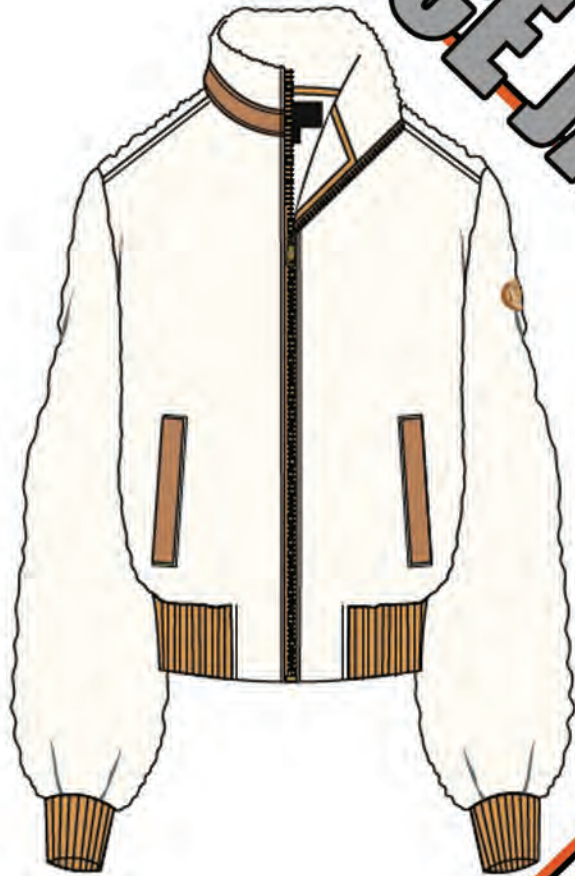
SUEDE BODY AND SLEEVES
PU LEATHER YOKE, COLLAR CUFFS, POCKETS AND HEM.



COLORWAY

| | |
|-------------------------------|-------------------------------|
| Black PU Leather 西雅图 1# | Pecan PU Leather 西雅图 6# |
| SUEDE BARK | SUEDE HONEY |

NICOLE FLEECE JACKET



The Nicole midweight super-soft fleece zip-up jacket has a beautiful design and is great as a midlayer or on its own. This zip-up is perfect and comfortable, no matter what you do, from hiking to lounging.

- ◇ Super-soft midweight fleece fabric.
- ◇ Built to keep you warm, dry and comfortable.
- ◇ Full zipper.
- ◇ Shell: 100% Cotton.
- ◇ Lining: soft microfleece bonded lining.



WOMENS

TL5004

Womens Nicole Fleece Jacket

**NEW
COLORS**

MSRP: \$65.00

SIZES: XS - 3XL



COLORWAY



TB6001 - Malboro Sherpa



TB6002 - Marlboro Shearling



TBI323 - Ruidoso Reversible Puffer



BOYS

TBI310 - Dallas Jacket



TBI210 - Dallas Vest



TBI113 - Cody Jacket





MARLBORO FAUX SUEDE SHERPA

Our Men's Marlboro faux suede sherpa jacket is so popular that it's now available for boys! This faux suede jacket mixes the Old West with contemporary fashion. Made out of faux suede, this full-zip jacket has a snap front storm flap. Two side-entry pockets give it that authentic Western look. Throw this jacket on over anything for warmth and an authentic Western look.

- ◇ Zipper and snap closure.
- ◇ Adjustable snap sleeves.
- ◇ Soft faux sherpa lining and collar.



BOYS

TB6001

Boys Marlboro Jacket

**NEW
STYLE**

MSRP: \$100.00

SIZES: XS - 4XL



TB6001 - COGNAC



MARLBORO FAUX SUEDE SHEARLING

Our Men's Marlboro faux suede shearling jacket is so popular that it's now available for boys! This faux suede jacket mixes the Old West with contemporary fashion. Made out of faux suede, this full-zip jacket has a snap front storm flap. Two side-entry pockets give it that authentic Western look. Throw this jacket on over anything for warmth and an authentic Western look.

- ◇ Zipper and snap closure.
- ◇ Adjustable snap sleeves.
- ◇ Soft faux shearling lining and collar.



BOYS

TB6002

NEW
STYLE

MSRP: \$100.00

Boys Marlboro Faux Suede Shearling Jacket

SIZES: 0/2 - 18/20



NOTE:

Black Colorway with black shearling.
Coffee colorways with dark brown shearling.

COLORWAY





REVERSIBLE RUIDOSO JACKET

The soft feel of a lightweight puffer jacket with a more durable construction, plus it's reversible! Two great styles in one with this stylish reversible jacket with printed Aztec pattern on the inside! Warm and comfy WarmTek Eco down filling. You won't have to worry about harsh weather conditions like cold wind and rain, when you have this jacket on, it helps you keep the elements out.

- ◇ WarmTek Eco Down that feels and keeps you warm like down.
- ◇ Two outside zippered pockets plus for easy access and convenience.
- ◇ Wind and rain resistant.
- ◇ Lightweight puffer jacket.
- ◇ Tempco® logo patch on sleeve.



BOYS

TB1323

Boys Ruidoso Reversible Puffer Jacket

**NEW
COLORS**

MSRP: \$50.00

SIZES: 0/2 - 18/20



TB1323 - BLACK



TB1323 - BARK



TB1322 - TAUPE



DALLAS JACKET

The Tempco® all-season bonded jacket repels rain, resists wind and comfortably moves with you. Performance fabric and construction, paired with a great fit and designer styling makes it the perfect companion for going from school to playtime.

- ◇ Engineered from durable performance fabric bonded to soft microfleece.
- ◇ Provides insulation and mild stretch to move with you.
- ◇ Three zippered outside pockets and one inside chest pocket.
- ◇ Wind & rain resistant.
- ◇ Microfleece lining, with cuff and waist adjusters for warmth and fit.
- ◇ Spread collar zips all the way up.
- ◇ True to size fit with no padding and no extra bulk.
- ◇ Tempco® logo patch on left shoulder.
- ◇ Microfleece inside of jacket.



BOYS

TB1310

Boys Dallas Softshell Jacket

**NEW
COLORS**

MSRP: \$50.00

SIZES: 0/2 - 18/20



TBI310-BLACK



TBI310-BARK



TBI310-COFFEE

DALLAS VEST

The Tempco® all-season bonded vest repels rain, resists wind and comfortably moves with you. Performance fabric and construction, paired with a great fit and designer styling makes it the perfect companion for going from school to playtime.

- ◇ Engineered from durable performance fabric bonded to soft microfleece.
- ◇ Provides insulation and mild stretch to move with you.
- ◇ Three zippered outside pockets and one inside chest pocket.
- ◇ Wind & rain resistant.
- ◇ Microfleece lining, with cuff and waist adjusters for warmth and fit.
- ◇ Spread collar zips all the way up.
- ◇ True to size fit with no padding and no extra bulk.
- ◇ Tempco® logo patch on left shoulder.
- ◇ Microfleece inside of jacket.



BOYS

TB1210

Boys Dallas Softshell Vest

**NEW
COLORS**

MSRP: \$40.00

SIZES: 0/2 - 18/20



TBI210-BLACK



TBI210-BARK



TBI210-COFFEE

BOY'S CODY PUFFER JACKET



Perfect for chilly school days or playtime, this lightweight Cody hooded puffer jacket is comfortable and stylish.

- ◇ Lightweight puffer hooded jacket.
- ◇ Two welt waist pockets.
- ◇ Polyester shell.
- ◇ Front zipper closure.
- ◇ Binding tape on cuffs, bottom hem and hood so that it stays in place.
- ◇ WarmTek eco down filling.
- ◇ Tempco® logo on the left shoulder.



BOYS

TB1113

Boys Cody Puffer Jacket

**NEW
STYLE**

MSRP: \$65.00

SIZES: 0/2 - 18/20



TGI522 - Bailey



TGI323 - Ruidoso Reversible Puffer



GIRLS

TGI310 - Dallas



HOODED BAILLEY JACKET

Your little girl will look adorable in this midweight puffer hooded jacket. It's WarmTek Eco Down makes it perfect for most for most winter days. The special blend of stretch polyester makes it perfect for a busy day of school or play.

- ◇ Two outside waist pockets.
- ◇ Tempco® logo patch on left shoulder.
- ◇ Full zipper with high collar for warmth.



GIRLS

TG1522

Girls Bailey Hooded Jacket

**NEW
STYLE**

MSRP: \$50.00

SIZES: 0/2 - 18/20



TG1522 - MAUVE



The soft feel of a lightweight puffer jacket with a more durable construction, plus it's reversible! Two great styles in one with this stylish reversible jacket with printed Aztec pattern on the inside! Warm and comfy WarmTek Eco down filling. Your little girl will be protected from harsh weather conditions like cold wind and rain, this jacket helps keep the elements out.



- ◇ WarmTek Eco Down that feels and keeps you warm like down.
- ◇ Two outside zippered pockets plus for easy access and convenience.
- ◇ Wind and rain resistant.
- ◇ Lightweight puffer jacket.
- ◇ Figure flattering style.
- ◇ Tempco® logo patch on sleeve.



GIRLS

TG1323

Girls Ruidoso Reversible Puffer Jacket

NEW
COLORS

MSRP: \$50.00

SIZES: 0/2 - 18/20



The Tempco® all-season bonded jacket repels rain, resists wind and comfortably moves with you. Performance fabric and construction, paired with a great fit and designer styling makes it the perfect companion for going from your daytime adventures to your evening ones. This jacket is fitted for a flattering look that accents your figure.

- ◇ Engineered from durable performance fabric bonded to soft microfleece.
- ◇ Provides insulation and mild stretch to move with you.
- ◇ Three zippered outside pockets and one inside chest pockets.
- ◇ Wind & rain resistant.
- ◇ Microfleece lining, with cuff and waist adjusters for warmth and fit.
- ◇ Spread collar zips all the way up.
- ◇ True to size fit with no padding and no extra bulk.
- ◇ Microfleece inside of jacket.
- ◇ Tempco® logo patch on left shoulder.



GIRLS

TG1310

Girls Dallas Softshell Jacket

**NEW
STYLE**

MSRP: \$50.00

SIZES: 0/2 - 18/20



TG1310 - BLACK



TG1310 - WINE



TG1310 - BARK